



\$GSX \$Long idea

NOV Call 100 for \$9.6 Risk Profit 20-100%

ALERT 10.01.20 GSX NOV Call 100

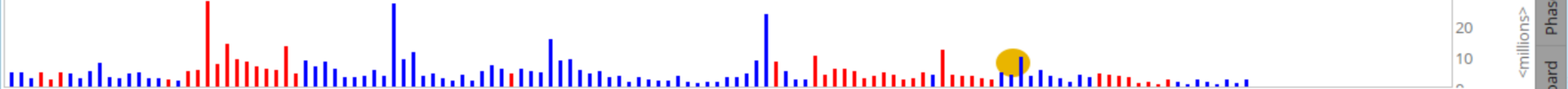
GSX
2
GSX TECHEDU INC ADR
107.02
-0.90
-0.83%
B: 106.92
A: 114.00
Share
Style
Drawings
Studies
Patterns

GSX 6 M 1D [NYSE]
D: 10/16/20
O: 108.09
H: 108.83
L: 105.65
C: 107.02
R: 3.18

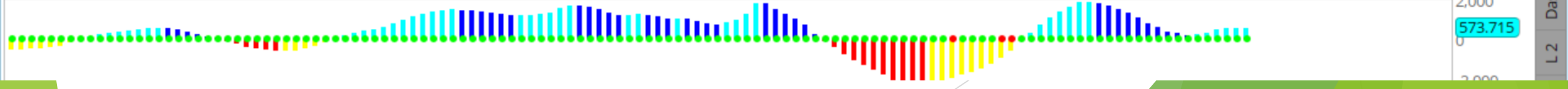
MarketBreakout.com
ATR 6.99
Vol 2,676,583
VolPlay 0.6



Volume 2,676,583



TTM_Squeeze (CLOSE, 20, 1.5, 2.0, 1.0) 573.715 0

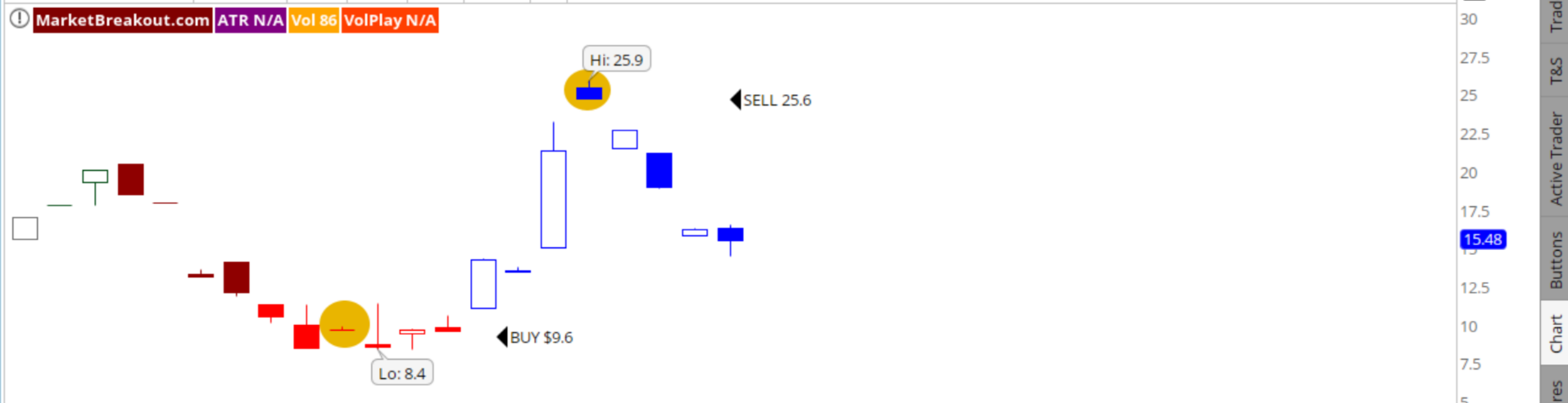


Trade
T&S
Active Trader
Buttons
Chart
Phase Scores
Dashboard
L2

We bought NOV call 100 on the breakout at \$9.6 and then sold our call for \$25.6

(201120C100) GSX 100 20 NOV 20 100 CALL 15.48 -0.72 -4.44% B: 15.30 A: 15.80 Share Style Drawings Studies Patterns

.GSX201120C100 6 M 1D D: 10/16/20 O: 16.3 H: 16.5 L: 14.5 C: 15.48 R: 2



Volume 86 OpenInterest 2,520



TTM_Squeeze (CLOSE, 20, 1.5, 2.0, 1.0) N/A N/A

We bought insurance in the form of an NOV put 80 for \$8 and then we sold our put for \$5. Total: 16-3=\$11. We invest \$17.6 Profit more than 65%

